

SOLMIX

SCM-2010



SEILIECO CORP.

JEIL APT FACTORY ROOM 504, 323-1
DANG JEONG DONG GUNPO-SI,
GYEONGGI-DO KOREA.
TEL : 82-31-429-6462, FAX : 82-31-429-6466
<http://www.seilieco.com>

– CONTENTS –

1. Product specification.....	1
2. Part Names.....	1
3. How to operate the touch panel.....	2~4
4. How to use the Adapter (Optional).....	4~5
5. Alarming and handling it.....	6
6. Cautions in handling the product.....	7

The warranty card and A/S form is included.

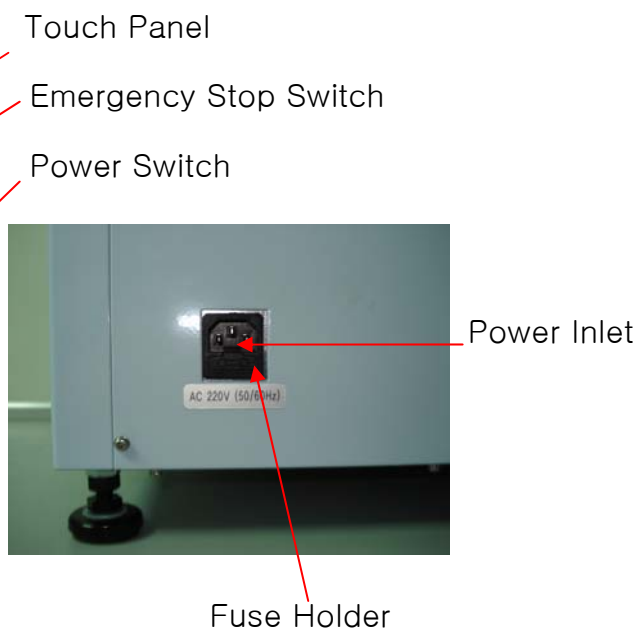
1. Product specification

This product performs mixing without bubbling by taking advantage of the direction and the speed difference of the rotating and revolving.

Specification of main unit	MODEL	SCM-2010
	LAY-OUT	392 x 422 x 460
	WEIGHT	28kg
	POWER INPUT	Support for both AC220 50Hz and 60Hz
Specification of the equipment	Revolving speed	200 ~ 1000 rpm
	Rotating speed	Ratio to revolving speed 1:4
	Weight of the material	500g (± 30 g)
	Bottle container	Special bottle container of 500g (Option: Barrel container)
Memory function	A program which can handle data input	Max. 9ea
	Input of revolving speed	200~1000rpm(Revolving)
	Setting of mixing time	1 sec. ~ 99 min for timing,
	Setting steps	Max. 8 steps

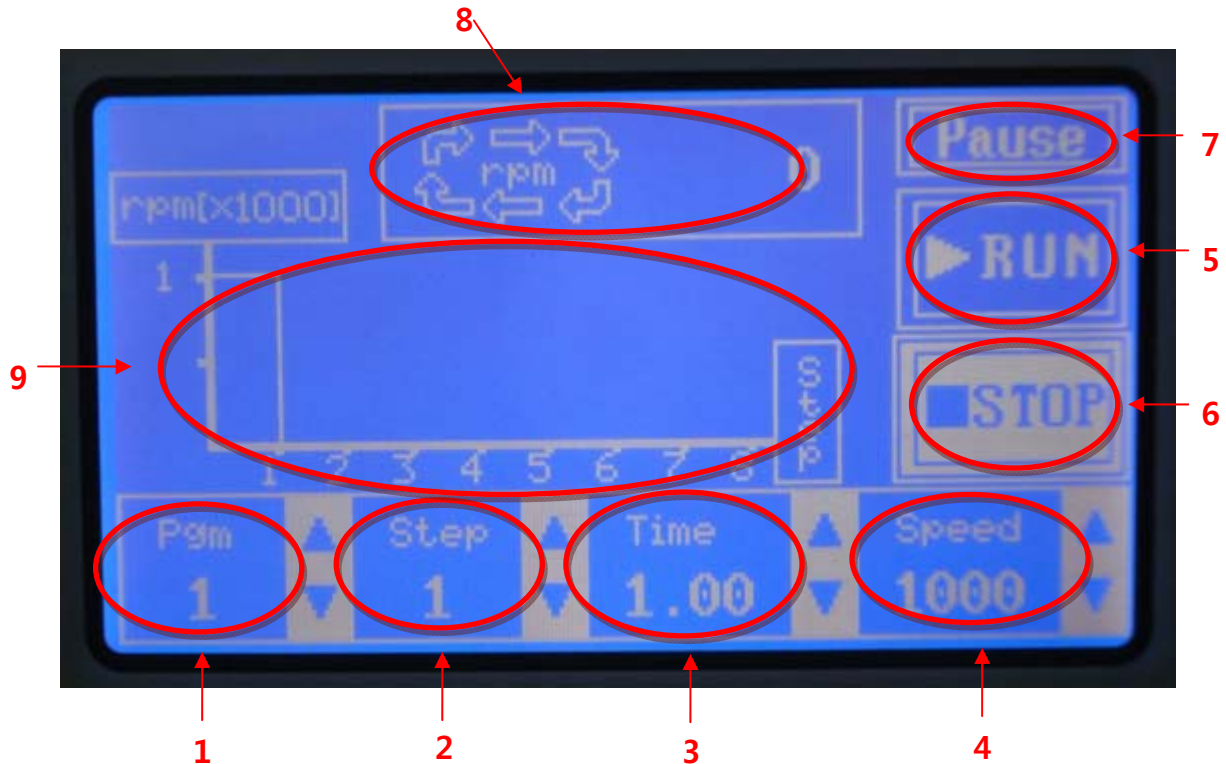
Note: The revolving speed may not reach the specified speed depending on the viscosity of the mixing material.

2. Part Names



3. How to operate the touch panel

3-1. Functions



1. Pgm : You can assign up to 9 Programs.
2. Step : You can assign up to 8 Steps.
3. Time : It operates for the duration assigned for the Step. (0.00 ~ 99 min. (0.01step))
4. Speed : It operates at the speed assigned for the Step. (0, 200 ~ 1000rpm (50step))
5. Run: Start button
6. Stop: Stop button (When it stops, Step, Speed, and Time get reinitialized.)
7. Pause: Pause button
(When it is reactivated, it continues from the paused moment.)
8. rpm : The speed of revolution (max. allowance: 10%)
9. rpm[x1000] : It shows the progress for each Step as a graph.

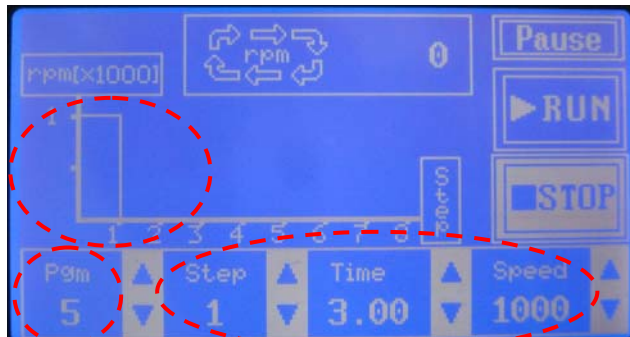
Note

1. It is not operating when the door is open.
2. The door does not open or close when there is no power

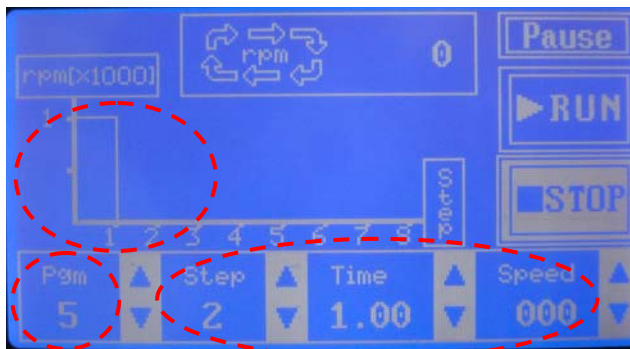
3-2. How to set the value

1. Select Pgm (Program No.).
2. After selecting the Step, assign the Time and the Speed. (Use Up/Down Keys to set the values.)

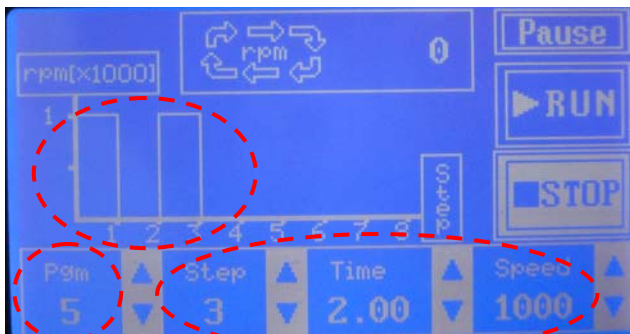
“ex) stop for 1 minute after mixing for Pgm5~3minutes, and stop after mixing for 2 minutes. (Speed: 1000)



- ① Step 1 ,Time 3.00,
Speed 1000 Setting



- ② Step 2, Time 1.00,
Speed 0 Setting



- ③ Step 3, Time 2.00,
Speed 1000 Setting

- ④ Unused step is
Time0,Speed 0 Setting
Time 0, Speed 0 Setting

3-3. How to operate the Program

1. Select Pgm (Program No.) as explained at 3-2 How to set the value.
2. Setting the time and method for each Pgm (1 ~ 9).

Note

Factory setting of Pgm for SCM-2010 is as follows.

Pgm 1. Stops mixing after 1 min.

Step 1, Set 1.00 for Time, 1000 for Speed

Pgm 2. Stops mixing after 1.5 min.

Step 1, Set 1.30 for Time, 1000 for Speed

Pgm 3. Stops Mixing after 2 min.

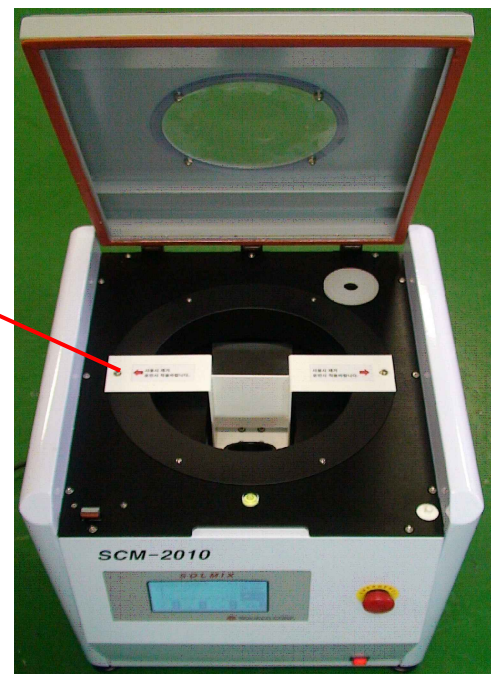
Step 1, Set 2.00 for Time, 1000 for Speed

Pgm 4. Stops Mixing after 2.5 min.

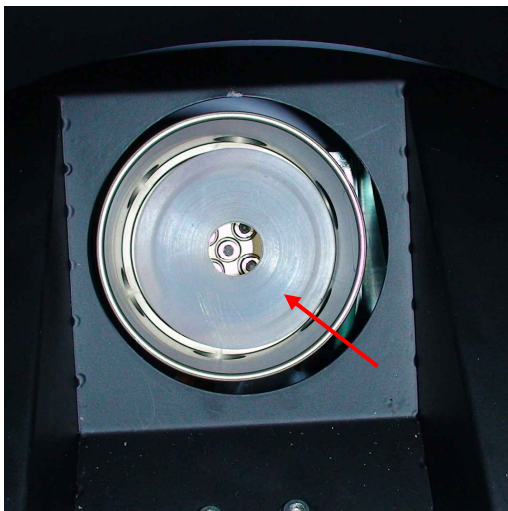
Step 1, Set 2.30 for Time, 1000 for Speed

3-4. How to prepare for mixing

1. This part is an anti-vibration safety device for transportation. Please install it before moving or transportation, and make sure to remove it before using the product.



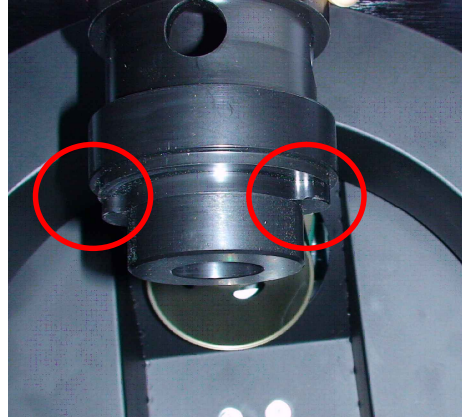
2. Prepare the materials to be mixed and the container.
3. Insert the solder container as in the following picture.
(Before inserting the container, insert the silicon first.)



4. How to use the Adapter (Optional)

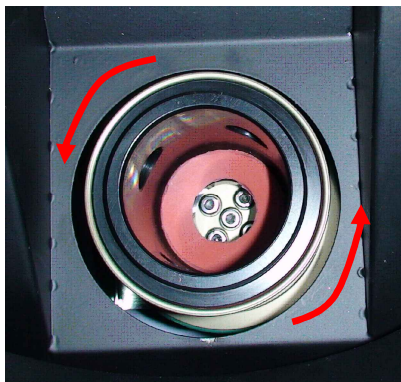
This is used only when the container is a syringe type.

1) Installing the Adapter



Please align the adapter with the holder and push it in as described in the picture.

2) Insert the barrel Type solder bottle.



Insert the Adapter



Insert the barrel Type solder bottle

3) Removing the Adapter



Please pull it with your fingle in the hole of the adapter as described in the picture.

5. Alarming and handling it

When a problem is detected in this product, the alarm gets activated and the operation gets suspended.

1) When the door is open

This happens when you press the Run button with the upper cover (door) open.

➔ The alarming will go away when you press the Alarm Message button after you close the door.

2) Alarming from vibration

If the mixing material does not meet the rules in quantity or in weight, it will cause severe vibration. The vibration will cause alarming and suspend the operation during the initial spinning. Please follow the rules.

➔ If you press the Alarm Message button, the alarm will go away.

3) Suspension in Emergency

This happens when the Emergency Suspension button (on the upper right corner) is pressed.

➔ You can reactivate by turning the Emergency Suspension button to the right, and press the Alarm Message button on the touch panel to stop alarming.

4) Malfunction of the motor

The alarm gets activated when malfunctioning of the motor is detected. This can happen when there are foreign particles in the motor or there are other problems in the motor. If there are foreign particles inside the motor, it will cause overload to the motor. You will have to protect from the foreign particles getting into the motor.

If the problems exist, please contact our A/S center.

6. Cautions in handling the product

The followings are important in handling this product. Please read carefully and follow the instructions.

1) Please use only the containers specifically made for this product.

If you use other containers, they may vibrate when they are used.

➔ Alarming ➔ Suspension of the operation

2) Follow the rules for the weight. This product has rules for the weight.

3) This product must be used after horizontally balancing it at a stable place.

4) The upper cover doesn't open when the power is off.

5) The upper cover doesn't open during the transportation.

If you try to open it forcefully, you may damage the product and it can also be dangerous



SEILIECO.CORP

A/S 신청서

* 아래의 항목을 정확하게 기재하여 주시기 바랍니다.

신청일자 :

1. 업체정보

업체명		전화번호	
신청자		휴대폰번호	
주 소			

2. 제품정보

모델명		구입일자	
시리얼넘버		특이사항	

3. 고장 증상

--

4. 요청사항

--

5. 동봉한 구성품

--

[신청서 작성 및 제품 발송시 주의사항]

1. 위 항목을 정확하게 기재해 주시기 바랍니다.

특히 통화 가능한 **휴대폰번호와 주소**를 정확하게 기입하셔야 수리 후 문자 및 제품 발송에 문제가 없습니다.2. 제품이 유실될 위험이 있사오니 동봉한 **구성품** 목록을 필히 기입하여 주십시오.

3. 운송 도중 파손될 위험이 있사오니 제품 포장에 유의하여 주시기 바랍니다.

4. A/S에 대한 진행사항이나 보다 더 자세한 내용은 본사 ☎ 031) 429 - 6462 로 전화 문의 바랍니다.

위의 내용으로 A/S 신청에 동의 합니다.

서명 :

(인)

* 위의 고장 증상에 대한 원인 및 처리내역입니다.

작성일자 :

1. 원인 분석

--

2. 처리내역 및 사용상의 주의점

--

위에 처리내역은 사실과 동일합니다.

담당 기사

서명 :

(인)

세일리코㈜